

# MONTHLY MEMBERSHIP PROGRESS REPORT

LOCATION NORTH CAROLINA

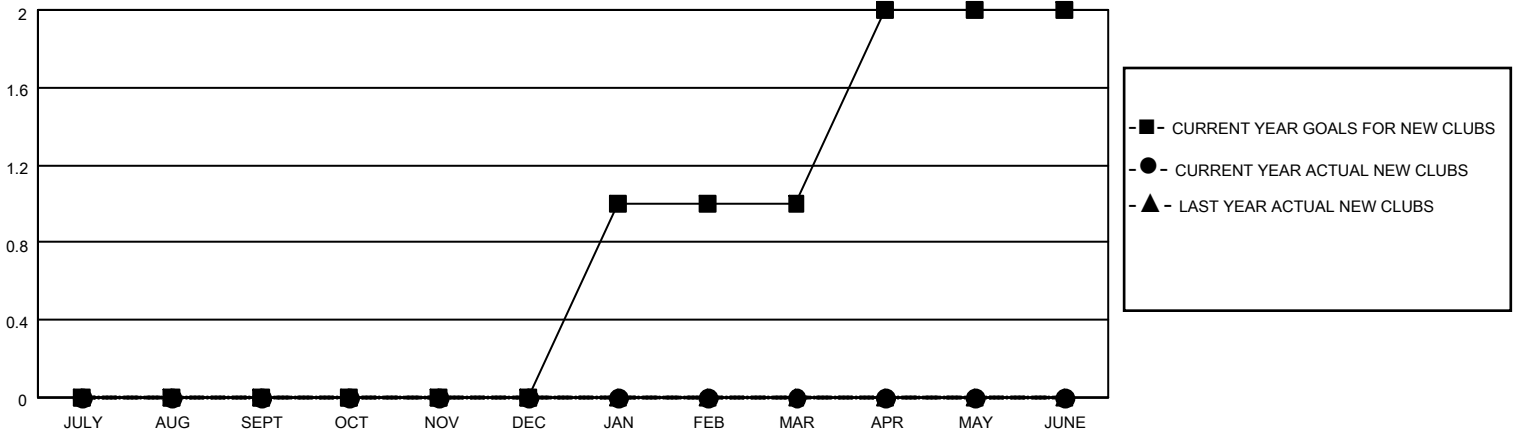
District 31 I

Results as of: 5/31/2021

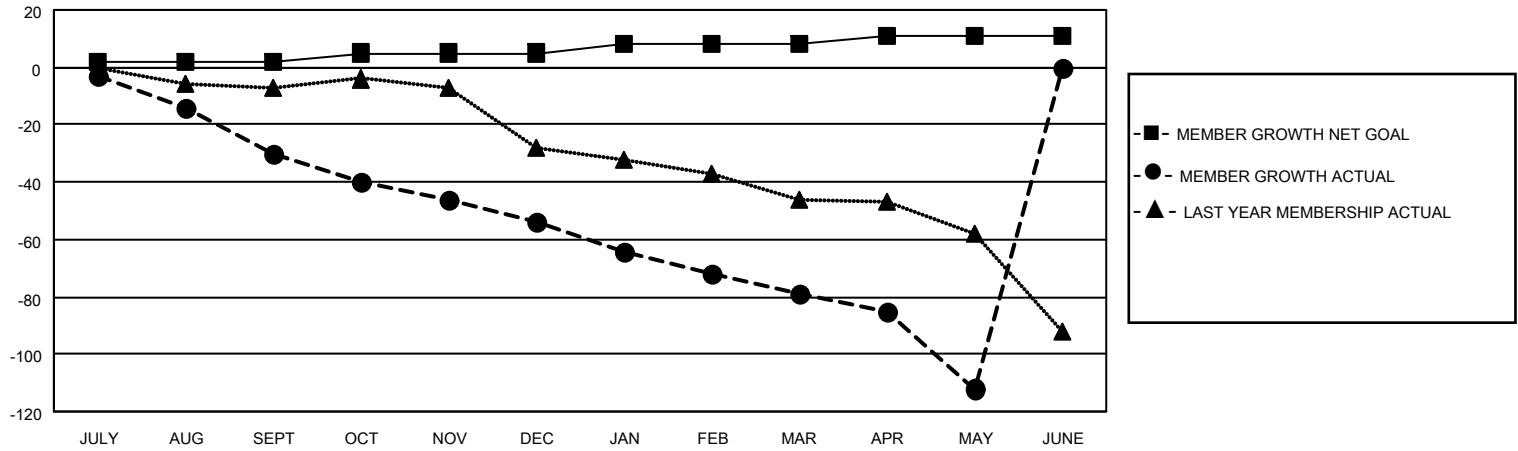
Clubs			
RESULTS FOR 2020-2021			
QUARTER	NEW CLUB GOAL	NEW CLUBS	DROPPED CLUBS
JULY/AUG/SEPT	0	0	1
OCT/NOV/DEC	0	0	0
JAN/FEB/MAR	1	0	0
APR/MAY/JUNE	1	0	0

Members			
RESULTS FOR 2020-2021			
QUARTER	MEMBER GROWTH NET GOAL	MEMBER GROWTH ACTUAL	DROPPED MEMBERS ACTUAL (including transfers)
JULY/AUG/SEPT	2	25	44
OCT/NOV/DEC	3	12	33
JAN/FEB/MAR	3	9	31
APR/MAY/JUNE	3	10	43

**GOALS AND ACTUAL NEW CLUBS CUMULATIVE**



**GOALS AND ACTUAL MEMBERS CUMULATIVE**



DROPPED CLUBS: 1	19 CLUBS OF 53 ADDED 1 OR MORE NEW MEMBERS	<b>GENDER DISTRIBUTION</b>
<b>DROPPED MEMBERS</b>	<a href="#">CLICK HERE FOR CUMULATIVE MEMBERSHIP DATA</a>	MALE            656 (67.08%)
DECEASED            31		FEMALE        322 (32.92%)
CLUB CANCELLED      0		TOTAL FAMILY UNIT MEMBERS            225
OTHER                120		FAMILY MEMBERS PAYING HALF DUES            114
<b>TOTAL                151</b>		